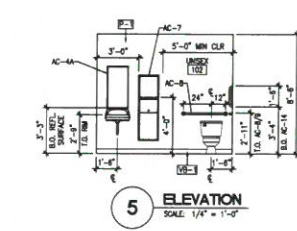


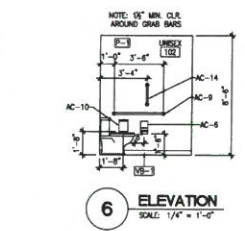
**1 WEST ELEVATION**  
SCALE: 1/4" = 1'-0"



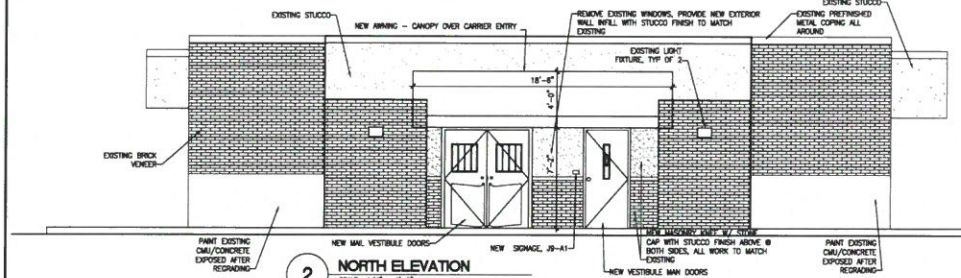
**Door Vinyls**  
PSIN # N-1



**5 ELEVATION**  
SCALE: 1/4" = 1'-0"



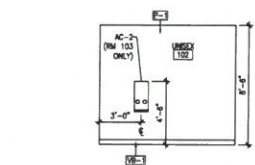
**6 ELEVATION**  
SCALE: 1/4" = 1'-0"



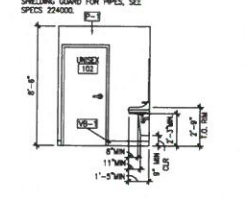
**2 NORTH ELEVATION**  
SCALE: 1/4" = 1'-0"

**13 DOOR VINYL SIGN FIN-1**  
SCALE: NTS

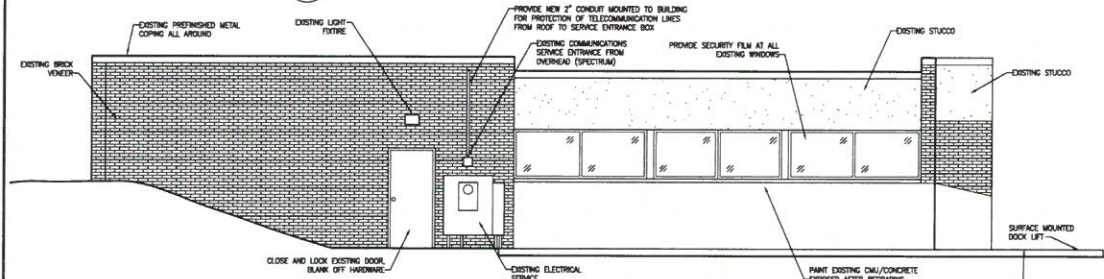
**14 NOT USED**  
SCALE: NTS



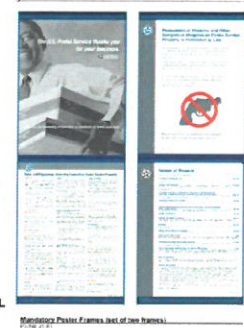
**7 ELEVATION**  
SCALE: 1/4" = 1'-0"



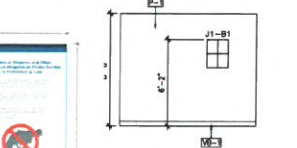
**8 ELEVATION**  
SCALE: 1/4" = 1'-0"



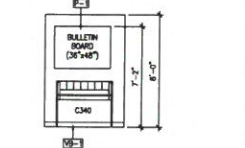
**3 EAST ELEVATION**  
SCALE: 1/4" = 1'-0"



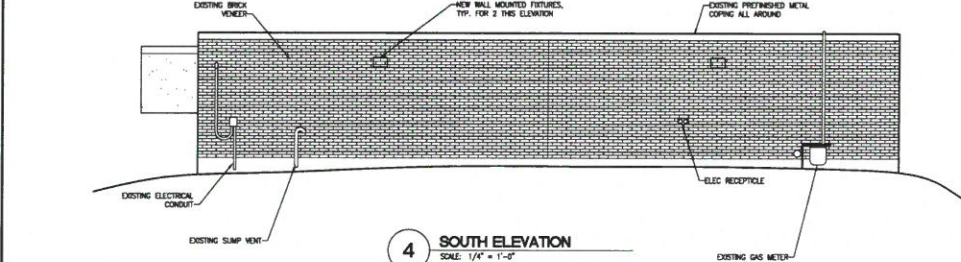
**17 SIGN J1-B1**  
SCALE: NTS



**9 ELEVATION**  
SCALE: 1/4" = 1'-0"



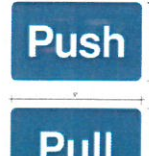
**10 ELEVATION**  
SCALE: 1/4" = 1'-0"



**4 SOUTH ELEVATION**  
SCALE: 1/4" = 1'-0"



**Ring Bell for Service Wall Plaque**  
PSIN# J9-A1  
Usage: Signs are to be used at all wicket doors with buzzer.



**Push/Pull Entry Door Graphics - Set of Two.**  
PSIN# J10-A1  
Usage: Signs are to be used at all wicket doors with buzzer and not for use with automatic door openers. For door with automatic door opener, signs are to be used with buzzer or separate levels of the door.

**15 SIGN J9-A1**  
SCALE: NTS

**16 SIGN J10-A1**  
SCALE: NTS